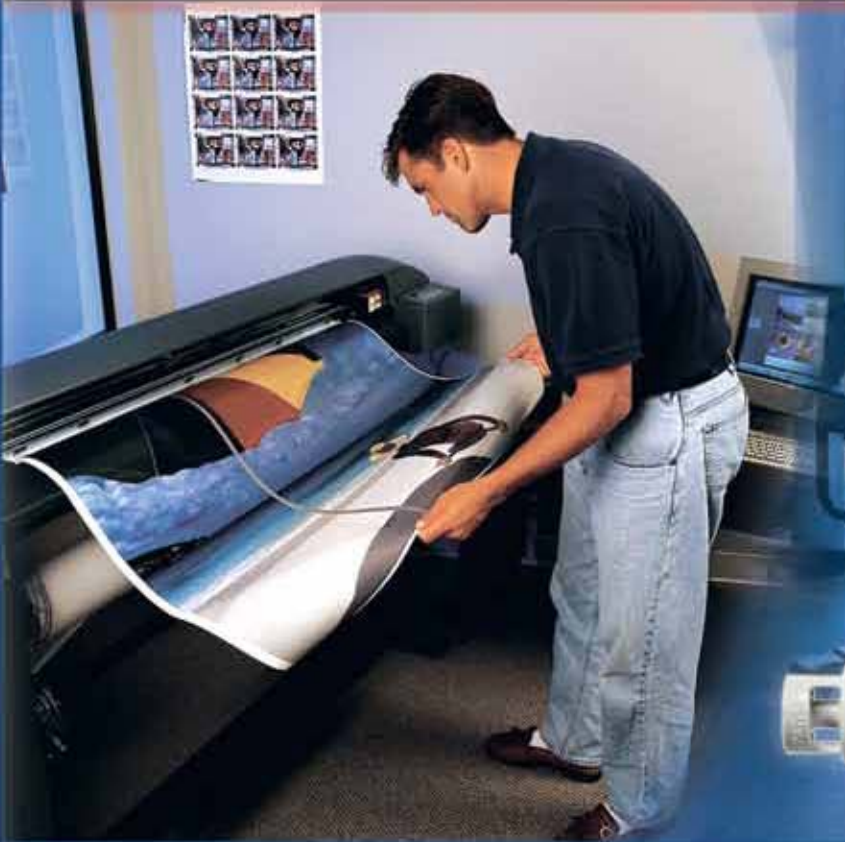


SMARTER  
SAFER  
FASTER  
CLEANER

# Quick Connections for



# Printing



## Clean, easy, secure

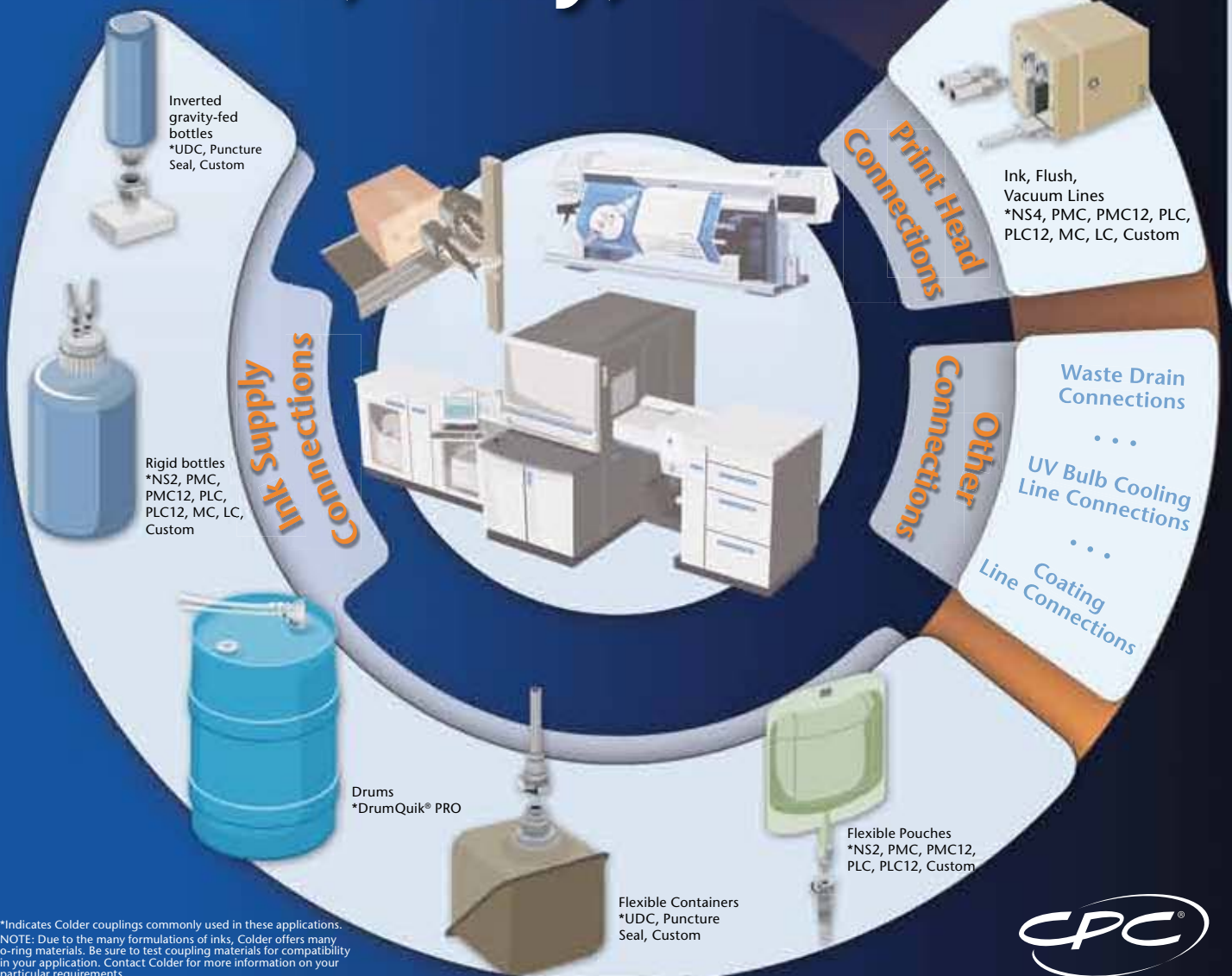
SMARTER  
SAFER  
FASTER  
CLEANER

**Colder's Quick Disconnect Couplings** have been widely used in many areas of the printing industry for over 29 years. They're designed to provide faster fluid line connection and disconnection, and easier equipment servicing. They also provide secure, leak-free connections, which prevent messy leaks and spills and reduce costly job downtime and damage to valuable equipment. From ink supply containers to print head connections, and many other print and ink applications, Colder couplings ensure clean, easy and secure fluid handling.

### Use Quick Disconnect Couplings To:

- Virtually eliminate costly leaks and spills with non-spill couplings
- Improve serviceability with quick connect and disconnect
- Verify ink with RFID enabled connections

# Clean, easy, secure



\*Indicates Colder couplings commonly used in these applications.  
NOTE: Due to the many formulations of inks, Colder offers many o-ring materials. Be sure to test coupling materials for compatibility in your application. Contact Colder for more information on your particular requirements.



# Colder Couplings for Printing



**NS2:** Compact design with non-spill valves

**Material:** Glass-filled polypropylene, TPV seals, TPV overmold†  
**Termination Sizes:** 1/8"-1/4" hose barb\*\*



**NS4:** Non-spill valves and soft-touch overmold

**Material:** Glass-filled polypropylene, EPDM o-rings\*, TPV overmold†  
**Termination Sizes:** 1/8"-3/8" hose barb\*\*



**NS6:** Higher flow, non-spill with soft-touch overmold

**Material:** Glass-filled polypropylene, EPDM o-rings\*, TPV overmold†  
**Termination Sizes:** 3/8"-1/2" hose barb\*\*



Pictured: PLC

**PMC:** Small plastic coupling with many choices of terminations

**Material:** Acetal, Buna-N o-rings\*  
**Termination sizes:** 1/8"-1/4" hose barb\*\*



Pictured: PLC12

**PMC12:** More chemically resistant than the PMC

**Material:** Polypropylene, EPDM o-rings\*  
**Termination sizes:** 1/8"-1/4" hose barb\*\*



Pictured: MC

**MC:** Durable metal coupling

**Material:** Chrome-plated brass, Buna-N o-rings\*  
**Termination sizes:** 1/8"-1/4" hose barb\*\*

**PLC:** Larger version of the PMC

**Material:** Acetal, Buna-N o-rings\*  
**Termination Sizes:** 1/4"-3/8" hose barb\*\*

**PLC12:** Larger version of the PMC12

**Material:** Polypropylene, EPDM o-rings\*  
**Termination Sizes:** 1/4"-3/8" hose barb\*\*

**LC:** Larger version of the MC

**Material:** Chrome-plated brass, Buna-N o-rings\*  
**Termination sizes:** 1/4"-3/8" hose barb\*\*



**DrumQuik® PRO:**

Bulk dispensing from drums

**Material:** Food grade, virgin polypropylene, polyethylene\*  
**Thread Sizes:** 2" American buttress, BCS 56x4"



**UDC:** Instant connections to bulk packaging systems

**Material:** Food grade, virgin polypropylene\*  
**Termination Sizes:** 3/8"-3/4" hose barb, 38mm cap\*\*



Pictured: iPLC

**iUDC:** RFID helps maintain warranty integrity, brand protection

**Material:** Polypropylene, acetal or polypropylene caps\*  
**Termination Sizes:** 1/4"-3/4" hose barb, 38mm cap\*\*

**iPLC/iPLC12:** RFID version of the PLC series

**Material:** Acetal, polypropylene\*  
**Termination Sizes:** 1/4"-3/8" hose barb\*\*

## IdentiQuik Smart Couplings™

Colder's couplings with built-in RFID tags assure the correct ink is used to prevent print head or system damage. IdentiQuik Smart Couplings™ use RFID technology to automatically identify fluid products and their characteristics, capturing data from point-of-origin through point-of-use.

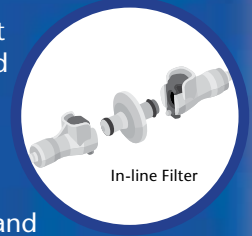


### Smart Couplings with RFID:

- Identify misconnections due to operator error
- Protect brands and equipment by halting or logging the use of unauthorized fluids
- Save time by electronically and visually verifying correct usage of liquid media

## Custom Coupling Designs

Colder's custom product Design Team has worked with customers around the world for more than 29 years to design custom couplings that solve specific problems and increase product performance. Colder collaborates with customers using its solid modeling capabilities, prototype equipment, an extensive test lab, and advanced manufacturing expertise.



In-line Filter

### Consider a custom design when:

- Quick disconnect couplings will increase your product's ease-of-use and reliability
- Specific coupling configurations outside standard offerings are needed
- Unique requirements warrant custom solutions

\* Colder couplings are available in multiple o-ring materials. Visit [www.colder.com](http://www.colder.com) or call Colder Products Company for available options.

\*\* Other terminations (pipe thread and compression) and configurations (in-line, panel mount and elbow) available.

† The overmold material is known as TPV (thermoplastic vulcanizite). This TPV is an alloy of polypropylene thermoplastic and fully vulcanized EPDM rubber. The material is typically resistant to water, acids, and bases. Parts shown are not to scale. Visit [www.colder.com](http://www.colder.com) for actual product size.

SMARTER  
SAFER  
FASTER

## HP Engineers Use Colder Couplings to Minimize Operator Intervention

**When Hewlett-Packard (HP)** was developing its versatile black bulk ink system for high-volume print runs used in industrial packaging applications, they turned to Colder Products Company, the worldwide leader in the design and manufacture of plastic quick disconnect couplings for flexible tubing. Colder's couplings ensure easy, safe, and secure connecting and disconnecting for fluid handling systems in a broad range of applications.

After investigating a number of off-the-shelf fluid connectors from different sources, the HP engineering team selected Colder's NS4 Series Non-Spill coupling. The component provided the reliable, easy-to-use, low-cost connection the team needed. Plus, the incorporation of non-spill shut-off valves augmented the product design by helping to avoid messy ink spillage when the coupler is disconnected.

The Colder coupling also incorporates an easy-to-use thumb latch to allow for secure, single-handed operation. An audible "click" confirms that a secure connection is made and assures a secure seal. The intuitive design of the NS4 makes it so simple that no tools are required to connect or disconnect the tubing, and special training is not necessary for regular operation of the thermal inkjet system.

"The Colder connectors are an integral part of the Bulk Ink Delivery System," says Daniel L. Briley, Engineering Manager, HP Speciality Systems. "They enable our OEM customers to design a very modular, flexible, clean and reliable printing solution that is tailored to the end user needs. They can be placed in line to make the ink supply and the print heads easily accessible and interchangeable. Because printheads are separate from ink supplies, part changes have less impact on the running system."

For more than twenty-five years, HP has provided the best performing, most reliable inkjet printing technology to a variety of industrial markets. Working with innovative partners like Colder, they continue to improve their solutions and continue to be a worldwide leader in imaging and printing technologies.



**SEDEM**

**In just one Click!**