

Non-contact thermometer

High performance in harsh environment
Compact and rugged sensor head

THERMO-HUNTER®

CS series

-40 to 500°C

CS-HT series

0 to 1000°C



Features

- Smallest sensor head worldwide, installable in a limited space
- Usable up to 180°C ambient temperature without cooling
- Highest waterproof rating IP69K
- Unique water repellent coating, easy maintenance
- 4 kinds of Optical specification
- Large digital display with 7-segment LED
- Easy temperature adjustment - 2 points teaching function

Optical Specifications



- ※ The optical resolution value stated above are at minimum 90% energy.
- ※ The size of measuring object should be sufficiently larger than the spot size.
- ※ CF lens requires the target object should be approx. 1.5 times larger than the spot size.

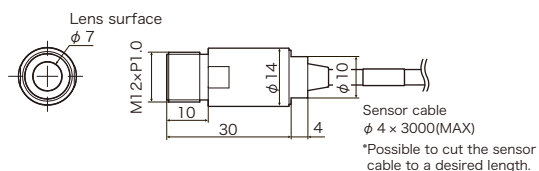
Specifications

Model	CS-30TAC	CS-40TAC	CS-30TAC-HT	CS-40TAC-HT
Temperature range	-40 to 500°C		0 to 1000°C	
Optical resolution (D:S)	φ30/500mm (22:1)	φ40/500mm (15:1)	φ30/500mm (22:1)	φ40/500mm (15:1)
Sensing element/Spectral response	Thermopile / 8 to 14μm			
System accuracy	-40 to 0°C:±3°C 1 to 500°C:±1% of reading or ±2°C, whichever is greater		±1% of reading or ±2°C, whichever is greater	
Repeatability	±0.5% of reading or ±0.5°C, whichever is greater			
Emissivity adjustment (ε)	0.1 to 1.2			
Temperature resolution	1°C			
Response time	150msec/90%			
Outputs	Analog output / 4-20mA(Output resolution 0.5°C) accuracy:±0.5% or ±1% Updating time:10msec Allowable load: 250Ω Impedance:47Ω Contact output / Photo MOS FET x2 (c contact x2), 300mA/30VDC or less			
Interface	Digital output			
Inputs	Synchronous trigger/Wave trigger/Bank switching function (4BANK)			
Display	7 segments LED			
Power supply	12 to 24VDC ±10%			
Current consumption	120mA (Normal) / Less than 80mA (ECO mode)			
Ambient temperature	0 to 100°C (Sensing head)		0 to 180°C (Sensing head)	
Relative humidity	35 to 85%Rh (non-condensing)			
Protection class	IP69K (Sensing head) / IP40 (Amp.)			
Vibration resistance	10 to 55Hz, amplitude 1.5mm, 2hours each in any axis			
Materials	Stainless (Sensing head) /ABS (Amp.)			
Cable length	3m			
Installation	Pannel mounted / DIN rail attached			
Dimension	M12(φ14)×34mm(Sensing head) / 35×52×38.5mm(Amp.)			
Weight	100g (Sensing head), 200g (amp.)			

*Specifications subject to change without notice.

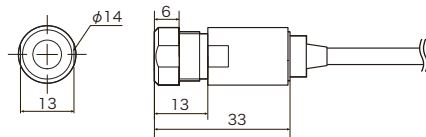
Dimensions

● Sensor head

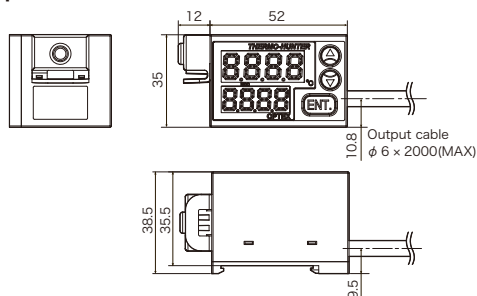


[mm]

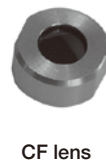
● Sensor head + CF lens



● Amplifier



Optional Accessories



OPTEX CO., LTD.

5-8-12 Ogoto Otsu, Shiga, 520-0101 Japan
 Tel : +81-77-579-8680 Fax : +81-77-579-8199
 URL : <http://www.optex.co.jp>

74098-04-13440-1507